

Darkroom Kits



Clean Darkroom Kits

DRU
DRUC

Catalog Code W6016

Allow easy installation of a darkroom by assembling the steel framework and covering with black-out curtains.

- Covered with a five-side (including the ceiling) integral type black-out curtain to ensure very high light blocking effect.
- A white LED penlight, which is very effective for checking work in a darkroom, is available as an accessory.
- Size must be selected considering the vibration isolator size and work space.

Type	Darkroom Kits DRU	Clean Darkroom Kits DRUC
Exterior		
Features	<ul style="list-style-type: none"> ● Allows easy installation of a darkroom space indispensable for image measurements, exposure testing, and optical measurements. ● Easy to dismantle, making it convenient for transportation and storage. 	<ul style="list-style-type: none"> ● Allows easy installation of a clean darkroom space indispensable for highly accurate and reliable optical measurements, testing, and other tasks. ● HEPA filters provide Class 100 dust collection efficiency in terms of cleanliness at the air outlet, with wind speed of approximately 0.5m/s. Although it varies according to the darkroom size, the cleanliness inside the darkroom is roughly Class 7 (Class 10,000) within 5 minutes after power-up. ● Fitted with an exhaust type compact ventilation fan.
Black-out Curtain	Material	Obverse side: Polyester, Reverse side: Neoprene rubber
	Light Blocking Effect	Class 1 shading ability (99.99~100%)
	Fire Retardancy	Fire retardant

Guide

- ▶ This product comes as a kit including a black-out curtain, pipes and a plastic hammer.
- ▶ Estimated time required for assembly: (e.g.) DRU-1816 will take about 30 minutes (with two people).
- ▶ To ensure optimal cleanliness, wear clean room garments while working in a darkroom. Clean room garments are available.
- ▶ Replacement HEPA filters (CD3052535) for darkroom kits (DRUC) are also available. Contact our International Sales Division for more information.

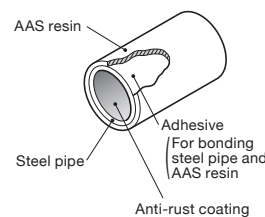
Attention

- ▶ The blackout curtains have a flap-type entrance that has flaps overlapping in the middle. Curtain-rail-type blackout curtains are also available. (Easy for getting in and out, but a gap between the main curtain and the entrance curtain will reduce the light blocking effect compared to the flap type. Contact our International Sales Division for more information.)
- ▶ Darkroom kits include curtain tie clips.
- ▶ Custom sizes or shapes not listed in the catalog are available. In such cases, purchase white LED light separately. Contact our International Sales Division for more information.

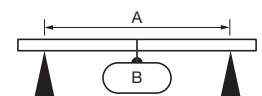
Frame Pipes

The pipes used for the skeleton framework of the darkroom kits and clean darkroom kits are $\phi 28\text{mm}$ steel frames. The structure and strength are as shown in the following figure. These pipes can be readily connected and assembled with T- and L-shaped joint pipes using a plastic hammer.

Structure



Strength



A [Dimensions]	B [Max. Strength]
450mm	about 1,666N (170kgf)
900mm	about 784N (80kgf)
1,800mm	about 392N (40kgf)

Specifications

Darkroom Kits Part Number	Clean Darkroom Kits Part Number	Frontage [mm]	Depth [mm]	Height [mm]
DRU-1212	DRUC-1212	1,200	1,200	2,000
DRU-1515	DRUC-1515	1,500	1,500	2,000
DRU-1816	DRUC-1816	1,800	1,600	2,000
DRU-2017	DRUC-2017	2,000	1,700	2,000
DRU-2219	DRUC-2219	2,200	1,900	2,000
DRU-2819	DRUC-2819	2,800	1,900	2,000
DRU-3020	DRUC-3020	3,000	2,000	2,000

DRU/GP-6BK

Catalog Code **W6017**

Fluorescent Light (White)



Designed to be hung from the steel frame of the darkroom ceiling for use.

- Fluorescent light using one lamp.
- Size: (W)613×(D)136×(H)80mm (excluding protrusions)
- Weight: 1.2kg
- Chain length of hook: 360mm (adjustable)
- Power cord: 0.3m + extension cord 5m
- Power source: AC100V 50/60Hz
- Power consumption: 20W
- Light and glow starter used
Light: FL20SS/Glow starter: FG-IE

Guide

- ▶ Purchase commercial fluorescent lights for replacement.

Specifications

Part Number	DRU-RL-2
-------------	-----------------

White LED Light



Specifications

Part Number	GP-6BK
-------------	---------------

With super luminosity chip white LED, this product is convenient for adjusting or checking equipment in a darkroom.

- Actual lighting hours: about 10 hours continuous operation (rough guide for battery replacement)
- Main body size: $\phi 22 \times 92$ mm
- Weight: 0.061kg (including the battery)
- Number of batteries: AA battery×1
- The battery that comes with this product is for testing, and may run out before the service life expected for new batteries.

Ventilation Fans



Ventilation fans specially engineered to keep out external light; available in two types: an exhaust type (DRU-VF) and a suction type (DRU-IF).

- Size: (W)160×(D)160×(L)193mm (excluding protrusions)
- Weight: 2.2kg
- Power cord: 3m (with switch)
- Power source: AC100V±10% 50/60Hz
- Power consumption: 14W
- Rough guide of small ventilation fan suction/exhaust capability: 2.7m³/min. for the motor main unit.

Guide

- ▶ Additional processing of black-out curtain is required to install this product in a darkroom. Pipes required for installation come with this product.
- ▶ Suction/exhaust capability of 6.2m³/min. type is also available. Contact our International Sales Division for more information.

Part Number	Type
DRU-IF	Suction type
DRU-VF	Exhaust type

LMC/LMT

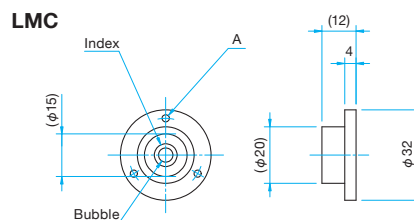
Catalog Code **W6018**

Levels convenient for installing a vibration isolator, optical laboratory bench, or various other instruments.



- The LMC type is round, and the LMT type is T-shaped.
- The LMC type provides the horizontal level of the measured target when the bubble is centered within the center ring. They can be secured on equipment or optical system using their mounting holes.
- The LMT type allows simultaneous leveling in two directions, vertical and horizontal.

Outline Drawing



Specifications

Part Number	External Size [mm]	A [mm]	Sensitivity [°]	Material	Finish	Weight [kg]
LMC-2	$\phi 32$	3- $\phi 2.5$, PCD $\phi 27$	1	Aluminum	Black coating	0.022
LMC-3	$\phi 32$	3- $\phi 2.5$, PCD $\phi 26$	1	Brass	Chrome plated	0.028
LMT-1	45×35	—	1	Aluminum	Black coating	0.027